

# Resurrection Lutheran Church



Called together by God's Love

We **Welcome** Joyfully

**Grow** Faithfully

and **Serve** Gratefully

in Jesus' Name

## Inside this issue...

- Page 1 Mission Statement  
Worship Schedule
- Page 2 Pastor Linda's Column  
Yarnover's  
Busy Mom's
- Page 3 Early Morning Bible Reading Group  
Thank You!  
Bible Reading Group  
Bible Study - The Book of Ephesians  
Sunday Morning Fellowship Change  
Resurrection Annual Meeting - January 22
- Page 4 Meal Ministry  
St. Joseph Community Food Shelf  
Local Organizations Share at Christmas  
Ngamini Kenya Village Medical Update
- Page 5 We're Going Green  
Share the Spirit Thank You  
Financial Stewardship
- Page 6 Christian Education News  
Schedule  
Good Gifts Fair Thank You  
Musical "Malice in the Palace"
- Page 7 Resurrection Staff and Council Members  
Office Hours and Contact Information  
January Birthdays
- Inserts Resurrection's January Calendar  
TWIGG News  
Youth & Family News

## New Year's Day Worship

Sunday, January 1

10:00 a.m.

## Sunday Morning Worship Schedule

Sunday Morning Worship

8:30 & 11:00 a.m.

Christian Education

9:45 a.m.

## WoW! Worship

WoW! Meal - 5:30 p.m.

Christian Education - 5:45 p.m.

WoW! Worship - 6:30 p.m.

Promise Choir - 7:20

Praise Choir - 7:20

Confirmation - 7:20

## Pastor Linda's Column

*"so that we, who were the first to set our hope on Christ, might live for the praise of his glory"*  
*Ephesians 1:12*

So that we might live for the praise of his glory. Wise men travel from afar for many, many days (maybe even weeks) following a star to see what this might mean. They find the Christ child and they give glory and praise for what has happened, a king is born! I'm sure they didn't fully understand the magnitude of what they experienced. But they made the commitment to follow that star expecting something wonderful and amazing. They found the baby Jesus, they brought him gifts, and offered their glory and praise to God.

What do we follow? The Son of God has been revealed to all, we don't have or need a star to follow. Instead, we are to follow Jesus. But we know that other things become priorities in our lives, from jobs to sports, from homes to cars, from kids to toys. And while they may all be good in and of themselves, can we follow them and will they make us happy in the end? Only Christ is whom we should follow, Christ is our priority, in the end we will only have Jesus!

What do we bring? Do we bring our "first fruits" or do we look at our budget, our time, our possessions and give what is leftover? Make Jesus and our faith journey a priority means we give the best and we give first of what we have and who we are to God. It is all God's; God has abundantly given us so much, God's creation for us to use, resources and abilities. We are to give thanks to God for the gifts and to give to God's kingdom so that all may be blessed.

How do we praise and glorify God? In all aspects of life do we give thanks and praise to God, for what God has done and continues to do in our lives? Do we ever think about thanking God first, instead of thinking we've done it all our selves? I believe that God is always at work in our lives and we should thank God, boldly and loudly, yes, even publicly for what God has given us.

We live because of what God has done for us, and for what God will continue to do in our lives. We live so that we might praise and glorify God in all things.

## Busy Mom's Group

### New Year New Year New Year

Make a commitment to spend some time with other busy moms in this new year!

This group meets on the third Tuesday of the month for mutual support and conversation.

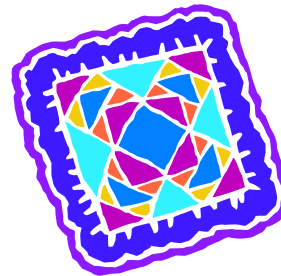
We as busy moms gather to encourage one another, be supported through devotion and prayer, and we also engage in service to others.

One of our projects is the prayer books we make for each child baptized in our congregation. We are always looking for other ideas.

Come when you can, leave when you must.

**Next meeting: January 17<sup>th</sup> at 7:00pm.**

We have several baptisms coming, so we have a need to finish more prayer books.



## Yarnovers

The Yarnovers are a group of knitters and crocheters who love to do charity work for the church and others. We meet every Wednesday of the month at 9:00am.

Quilters, Knitters, Crocheters all gather to share fellowship and work on projects. This group is committed to making **prayer shawls** and **blankets for every baptism** in our congregation. We are always in need of these items. It would be great if you could join us on Wednesdays, but if you cannot and would like to knit we appreciate your help.

***We are in need of baby blankets for baptisms, and prayer shawls!***

## Early Morning Bible Reading Group

This group meets at 6:30 a.m. on two Friday mornings each month and is led by Pastor Dwaine. Coffee and muffins are provided. It's a great way to start the day! Our next meetings will be January 6 & 20.

We are reading the book of Mark this month. Our readings are January 7 – 13: Mark 1-4; January 14 – 20: Mark 5 – 8; January 21 – 27: Mark 9 – 12; January 28 – February 3: Mark 13 – 16.



---

## Thank You!

Thanks to Roger Linn, Larry Rahn, Dale & Dean Hasch and Dennis Dahl for providing Resurrection with our Christmas trees. And thank you to all who helped decorate for the Christmas season. Another thank you to all who provided special music on Christmas Eve.

---

## Sunday Morning Fellowship Change

We are making a change in our Sunday morning fellowship times at Resurrection. Because most members tend not to remain after our 11:00 a.m. worship for fellowship time, we will have an extended time of fellowship (with coffee and goodies) between our services. This opportunity will extend from approximately 9:30 a.m. to 10:55 a.m. We encourage those attending 11:00 a.m. worship to come early and join other congregation members in the Fellowship Hall for conversation.

## Bible Reading Group

The Bible Reading Group meets every Tuesday at Gruber's Café at 12:00 noon. This Café is just north of Famous Dave's in a strip mall. Bring your lunch or grab a sandwich or soup at the café. Walk with us as we explore the Bible and make Scripture our first language. We continue in the book of Genesis. Everyone is invited!

---

## Bible Study – The Book of Ephesians

This group meets at Arlington Place to join with the residents for bible study. They are a lively group that loves to study God's Word. This is a wonderful opportunity to reach out to others in our community, especially those who are lonely and alone. We meet the third Tuesday of each month from 10:45-11:30am. We are studying the book of Timothy and Titus.

**Our next meeting is January 17<sup>th</sup> at 10:45am.**



## Resurrection Annual Meeting January 22

Resurrection's Annual Meeting will take place on Sunday, January 22 at 9:45 a.m. between our two worship services. Grab a cup of coffee in the Fellowship Hall and gather in the Sanctuary for our meeting. We'll review the last year and consider where God is leading our congregation in the future.



## Meal Ministry

**We have had such a wonderful response to this ministry! Thanks to all of you who provide meals!**

An outgrowth of the Busy Mom's, this ministry brings a meal to a new mom or to those who have been recently hospitalized or recovering from surgery.

In order to accomplish this, we need more volunteers, those willing to make and deliver a meal.

This ministry is being coordinated by Andrea Metcalf. She will give you a call with all the information needed for the meal. A typical meal may be: lasagna, salad, bread and dessert for the family.

We would like enough volunteers so that you need only provide 2 meals per year.

If you are interested in this important ministry, please visit with Pastor Linda or Andrea Metcalf.

**The response has been so great, thank you, but we could use a few more volunteers!**

---

## Local Organizations Share at Christmas

Donations were received by Resurrection in December from the St. Joseph Lions and the St. Joseph Y2K Lions, for local needs. Money has been distributed to the St. Joseph Food Shelf, Central Minnesota Habitat for Humanity, Casa Guadalupe, and to other local needs.

Thank you to the Lions and Y2K Lions for your generosity during the Christmas season.

## St. Joseph Community Food Shelf



St. Joseph Community Food Shelf wishes you a joyous new year and thanks you for your generous support this past year.

This month please consider donating personal and household

items. Shampoo, conditioner, toothpaste, toothbrushes, deodorant, shaving cream, shavers, body wash, soap, and feminine products are a few ideas. Household items include: facial tissue, paper towels, toilet paper, dish soap, and various cleaning products. All items can be placed in the grocery cart located in the narthex.

Monetary donations are always appreciated. Coordinators of the food shelf can purchase needed items.

When writing a check, it can be written to RLC with "food shelf" written on the memo line.

Your generous support helps families in need within the St. Joseph area. Do your or someone you know, need the services of the food shelf. The food shelf is located across from the St. Joe Meat Market. Hours are Mondays and Thursdays from 1-3.

---

## Church & Society News Ngamini Kenya Village Medical Clinic Update

You're invited to attend pancake & sausage breakfast at St. Joseph Fire hall on Feb. 12. Proceeds will be dedicated towards the Kenya Ngamini Medical Clinic. In addition, our second annual clinic fundraiser is scheduled for April 20 at St. Ben's Gorecki Center.

Some committee members are planning a trip to Kenya on June 8 - 22 (including National Parks safari); if interested call 320/363-8791.



## We're going GREEN!

REDUCE- REUSE – RECYCLE



### Green Team

The Green Team continues to find ways to save our environment and care for God's creation. We are well into planning rain gardens for our facility and would ask any to join us who would be interested in planning and maintaining our gardens.

In addition we are always looking for ways to keep our congregation well informed about Green matters. We continue to meet about many important issues.

### Reduce, Reuse:

**Skip the bags.** Bring your own reusable shopping bags and skip the bag altogether for small purchases. Use produce bags sparingly.

**Select products with less packaging.** Choose products packages simply, with no packaging or with a single reusable or recyclable material.

**Buy in bulk.** Reduce plastic waste by choosing the largest container for items with a long shelf-life like vinegar, kitty litter, shampoo, laundry detergent, etc.

**Refill your bottle.** Use products that can be refilled such as **Restore's** laundry detergent, dish soap, and hand soap. Retail stores throughout Minnesota offer Restore refill stations.

**Reuse your empty pill bottles.** Donate clean, label-free pill bottles to your veterinary office or local humane society. Atonement Lutheran in St. Cloud also collects them for reuse.

**Donate discards to art programs.** Check with local schools to see if they can use any items that may be recycled: plastics, paper tubes, cards, etc.

**Buy products made out of recycle material.** Close the loop by looking for and purchasing products with labels that say they contain post-consumer material.

*It's horrifying that we have to fight our own government to save the environment.  
Ansel Adams*

---

## Share the Spirit – Thank You!

Thank you to all who contributed to our "Share the Spirit" collection. 6 large bags and a box full of hats, mitten, and scarves plus \$725.00 in gift certificates were given to People's Church and Casa Guadalupe. Mayuli Bales of Casa Guadalupe said that the children especially are so excited when they see the hats, mittens, and scarves that have been given. Thanks to Lisa Wallin's Girl Scout Troop for the scarves they made and the gloves they contributed.

God's blessings to you.

---

## January Thru November 2011 Financial Stewardship

General Fund Mission Spending Plan for January thru November 2011      \$249,896.24    General Fund Income for January thru November 2011      \$246,782.67

**We have achieved 98.76% of our 2011 YTD stewardship plan.**

# Christian Education News!

## Called to Give

### Christian Education Schedule

January 1-No Classes/January 4  
January 8/11 - Simeon and Anna  
January 15/18 - Jesus the Word  
January 22/25 - Jesus' Baptism  
January 29/February 1 - God Calls Samuel

---

### Good Gifts Fair – Thank You!

Thanks to everyone who contributed to the Good Gifts Fair. Over \$1900 was given to purchase items for our neighbors in need around the world.

---

### Save the Date!

#### Practices begin Saturday, January 7 for Resurrection's Intergenerational Musical! Don't Miss Out!!!!

You are invited to be a part of Resurrection's first intergenerational musical! This will be held in place of our annual Variety Show on Sunday, February 12 with a dinner prior to the musical. Casting for the musical will be held on Saturday, January 7 at 10:00 a.m. Practices will be on Sunday's beginning January 8, at 12:30 p.m. Prior to the practice we will have a quick lunch and then "get to work". This year the musical that we will be doing is "Malice in the Palace", a story about Esther. People of all ages are encouraged to be a part of this exciting event. If you would like to be a part of this musical, sign up at the Welcome Center. This is a big commitment and *everyone is expected to attend all practices and dress rehearsals*. If you have any questions, contact Sandy Spiczka, Susan Curtis or Kathy Kuebelbeck.

## Resurrection's Staff

Pastor	Pastor Dwaine Bruns
Associate Pastor	Pastor Linda Lagergren
Youth & Family Ministry	
Coordinator	Sandy Spiczka
Worship & Music	
Coordinators	Jeanne Bruns
	Karen Bobeldyk
Church Secretary	Kathy Kuebelbeck
Custodian	Dale Hasch
Nursery Care	Sarah Torchia
Adult Choir Director	Jeanne Bruns
Worship Team Coordinator	Jeanne Bruns
Children's Choir Director	Kathy Kuebelbeck
Pianists	Karen Bobeldyk
	Jeanne Bruns
	Carolyn Finley
	Kathy Wirth
	Diana White

## Resurrection's Council Members

<u>Council Members</u>	<u>Committee</u>
Pastor Dwaine Bruns	
Pastor Linda Lagergren	
Steve Johnson	Finance
Dan Kuntz	Outreach Team
Mark Kranz	Stewardship
Wilbur Wilkens	Treasurer
Rachel Kuebelbeck	Christian Education
Jeanie Wilkens	Church in Society
Dale White	Staff Support
Mike Lage	Property
Troy Battig	Worship & Music
Lou Jagielski	Youth & Family

## Council Officers

Troy Battig	President
Dan Kuntz	Vice-President
Mark Kranz	Secretary

## Church Office Hours

Monday: Closed  
 Tuesday - Friday: 8:00 a.m. to 3:30 p.m.

## Phone Numbers and Staff Email

Phone Number:	320-363-4232
Fax Number:	320-363-1129
Church's Email Address:	rlc@rlcstjoe.com
Pastor Dwaine's Email:	dbruns@rlcstjoe.com
Pastor Linda's Email:	llagergren@rlcstjoe.com
Sandy's Email:	sspiczka@rlcstjoe.com

Web Site: [www.rlcstjo.org](http://www.rlcstjo.org)

## January Birthdays

Rick Klein	1/01
Colleen Kuebelbeck	1/01
Dawna Anderson	1/03
Cindy Klocker	1/03
Emma Nelson	1/03
Mallory Schneider	1/03
Lisa Christenson	1/04
Mike Metcalf	1/04
Derek Haug	1/06
Ericka Klein	1/06
Aiden McCarty	1/07
Cora Metcalf	1/07
Audrie Kerber	1/08
Jill Abbott	1/09
Scarlett Johnson	1/12
Taylor Buchta	1/10
Sally Davidson	1/13
Isaac Fuchs	1/14
Sean Lance	1/14
Andrew Bernstetter	1/15
Jenna Rhode	1/15
Jamie Benson	1/16
Dennis Dahl	1/16
Kathy Kuebelbeck	1/16
Betsy Johnson-Miller	1/16
Jennifer Bauer	1/18
Kristin Schmidt	1/18
Chad Birk	1/19
Sydney Birk	1/20
Michael Holbrook	1/21
Landon Petron	1/22
Greg Beaumont	1/23
Anna Bernstetter	1/24
Aidan Tran	1/26
Alison Tran	1/27
Lisa Wallin	1/27
Mason Burch	1/28
Jodi Nesland	1/28
Todd Barrow	1/29
Colleen Hollinger-Petters	1/29
Vikki Jones	1/29
Angie Lance	1/29



Resurrection Lutheran Church  
610 N Co Rd 2  
PO Box 549  
St. Joseph, MN 56374  
320-363-4232  
www.rlcstjo.org

Non Profit  
US Postage  
PAID  
St Joseph MN  
Permit # 14

*Address Service Requested*



**Genesis**

---

# Resurrection Lutheran Church

## **New Year's Day Worship**

Sunday, January 1  
10:00 a.m.

## **Sunday Morning Worship Schedule**

Sunday Morning Worship

8:30 & 11:00 a.m.

Christian Education

9:45 a.m.

10:00 a.m. Adult Education

## **WoW! Worship (Worship on Wednesday)**

WoW! Meal - 5:30 p.m.

Christian Education - 5:45 p.m.

WoW! Worship - 6:30 p.m.

Promise Choir - 7:20

Praise Choir - 7:20

Confirmation - 7:20

